



Packaged ACs  
& Ducted Splits



Nothing comes close to its cooling. Or its wide range.

With more than 7 decades of experience in air conditioning, over a million tons installed and over 200 trained and dedicated dealers across the country, Blue Star has been the undisputed market leader in ducted systems, in India.

Blue Star's leadership has not been limited to sales, service, reach and range alone. The Company has driven major technological innovations in the field, resulting in unique products being introduced into the market over the past decades.

Blue Star was the first to introduce scroll technology into ducted systems over a decade ago. Then came the HiSen and HiPer Packaged ACs which were designed to cater specifically to high sensible heat and high ambient applications such as IT parks and server banks. Blue Star also pioneered the HiPer Green Packaged unit to be used in green building applications.

Blue Star has a wide range of air cooled and water cooled floor/ceiling mounted ductable ACs with various refrigerant options to suit customer needs.



## Salient features



Highly efficient units with scroll compressors



Robust and reliable



Designed to work effectively even in ambient temperatures as high as 50°C



Aesthetically superior



Compatible with R410A eco-friendly refrigerant



Service-friendly design

## The Ducted Systems Range

### Air Cooled Packaged ACs

Blue Star is a pioneer in the manufacturing of floor-mounted Packaged ACs for over three decades now. These systems are popular in commercial applications due to their distinct advantages of service-friendliness and extended ducting capabilities.

In this range, the floor-mounted indoor unit houses the DIDW blower, coil, filter and compressor, while the outdoor unit houses the high-efficiency condenser and new-design propeller fan. The strategic design, which places the compressors in the proximity of the evaporator in the indoor unit, further enhances the efficiency of this system.



### Water Cooled Packaged ACs

Where water is available in plenty, Blue Star's Water-cooled Packaged ACs offer higher efficiency than air cooled systems since water is a superior cooling medium compared to air. These systems come pre-charged and the unit comprises of the filter, blower, evaporator, compressor and water cooled condenser. These water cooled systems offer both higher efficiency as well as lower power consumption compared to air cooled systems.





### Air Cooled Ductable Splits

Where floor space is scarce but the AC unit can be housed above the false ceiling, ducted splits are the best choice. The indoor unit houses the evaporator, DIDW blower and filter in a compact powder-coated sheet metal unit, while the outdoor unit houses the compressor, the condenser and the new-design propeller fan.

### Water Cooled Ductable Split Units



The water cooled ducted unit is another notable innovation from Blue Star. These units are perfectly suited for shopping malls, office complexes, service apartments, industrial airconditioning and any application with multiple tenants. The advantages of the water cooled unit are as follows:

- Independent control and billing is possible in multi-tenant premises.
- Units can be mounted within the tenant's place.
- Investment can be in phased manner, no need to lock capital.
- Aesthetically better as outdoor unit is not exposed unlike, in air cooled systems. Also refrigerant pipe limitation is taken care of as condensing unit need not be kept in open space and can be mounted near IDU within the building.
- New DSW-mini series units are available in smaller capacities: 1.5TR, 2TR and 2.5TR



# Product Line-Up


## R3 Series

Appearance	Tonnage (TR)	6	9	12	18	24
	Air Cooled Packaged Air Conditioners with R410A	●	●	●	●	●
	Air Cooled Ducted Split Air Conditioners with R410A	●	●	●	●	●

## R1/R2 Series

Appearance	Tonnage (TR)	3	5.5	8.5	8.75	11	16.5	17	22
	Air Cooled Ducted Split Air Conditioners with R22	●	●	●	●	●		●	●
	Air Cooled Ducted Split Air Conditioners with R407C	●	●	●	●	●		●	●
	Air Cooled Packaged Air Conditioners with R22		●		●	●	●		●
	Air Cooled Packaged Air Conditioners with R407C		●		●	●	●		●
	Water Cooled Ducted Split Air Conditioners with R22	●	●		●	●			
	Water Cooled Ducted Split Air Conditioners with R407C	●	●		●	●			
	Water Cooled Packaged Air Conditioners with R22		●			●	●		
	Water Cooled Packaged Air Conditioners with R407C		●			●	●		

## DSW Mini - R1 Series

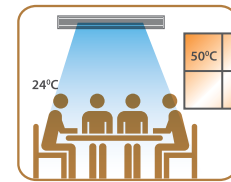
Appearance	Tonnage (TR)	1.5	2
	Water Cooled Ducted Split Air Conditioners Mini Series-R22	●	●

## Features



### Operation at Higher Ambients

The condenser in this new series of ducted systems is designed to operate effectively at higher ambient temperatures, up to 50°C, ensuring efficient cooling even in the harsh summer months, without tripping.



### Lower Running Cost

The high-efficiency fan used in these systems is specially designed with blades that offer better air flow. This, along with more coil face area, helps in reducing the condensing temperature, thereby lowering power consumption and running cost.



### Service-friendly Design

The design of the outdoor unit in the ducted system range is such that it offers easy access to the compressors and the control panel on the side. And the fan motor assembly on the front panel is also easily removable for repair. The condenser coil is much easier to clean as well.



### Scroll Compressor-driven

Due to their inherent design characteristics, scroll compressors have very high volumetric efficiency. They are ideal for air conditioning applications where the compression ratio is not very high. All Blue Star Packaged ACs and Ducted Splits use scroll compressors.



### Intelligent Microprocessor Controller

All units are controlled by microprocessor-based controllers with the following features:

- Seven-segment LCD display
- Auto restart after power failure
- Fault display
- Run-time equalisation
- Non-volatile memory
- Touch-key on/off switch
- Single-phasing and phase reversal protection
- Time delay for compressor operation
- Accurate temp. control +/- 1°C
- Provision for fire alarm input



### Blue Fin Condenser and Corrosion-resistant Body

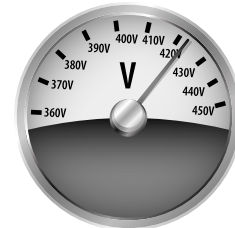
All units have special blue fins and are made of galvanised sheets, which are powder-coated after fabrication, making them corrosion-resistant while looking elegant, improving overall life of the system.





### Wide Voltage Range of Operation

The ducted systems can function across a wide voltage range of 360 - 440 V, making them a rare breed.



Wide voltage range



### Multi-compressor Advantage

Most of these ducted systems use more than one compressor. This gives them the advantage of high part-load efficiencies, since the entire evaporator surface is available to the system even during part-load conditions.



### Run-time Equalisation

The intelligent controller ensures that all compressors (in multi-compressor units) run for equal number of hours, thus ensuring equal wear.



### Lower Noise Levels

The outdoor units of these ducted systems are fitted with bird-wing design and high-efficiency fans. This lowers the noise levels significantly.



### Hydrophilic Coating

The aluminium fins used on the evaporator coil have a hydrophilic coating. This coating helps retain the moisture on the fins from where they drain to the bottom by gravity. This helps reduce the moisture carry-over with the supply air.



### DIDW Blower Design

These systems use advanced DIDW type centrifugal blowers with forward curved blades, which offer higher air throw.



### Efficient Air Filters

Air filters made of non-woven polyester media enclosed in HDPE mesh are provided. These are efficient and can be cleaned easily.

## Advantage Blue Star

### Seven Decades of Experience

Over 7 decades of experience in the air conditioning field makes Blue Star the undisputed market leader in ducted systems.

### State-of-the-art Production Facilities

Blue Star has 7 world-class manufacturing facilities across the country to produce various HVAC products starting from small room ACs to big Chillers. These factories are equipped with the latest automated machine tools and quality control systems, manned by experienced engineers. Blue Star also has an experienced R&D team to develop world-class products for its customers.

### Cooling Solutions Made Easy

Blue Star's engineers offer optimal air conditioning solutions for various air conditioning needs of customers. The process starts from cooling load calculations to well designed air-distribution systems and equipment layouts before even embarking on a project.

### Superior Project Management

Air conditioning of commercial spaces requires meticulous planning and timely execution as it involves coordination with architects, interior designers, consultants and various other professional agencies. Blue Star with its well trained dealers offers solutions for quality and timely execution of air conditioning projects for various applications.

### After Sales Support

Blue Star provides after sales service through offices spread across 17 cities. There is also a network of well trained dealers across the country to take care of customers' service needs. The wide network and well trained service personnel ensure that customers enjoy their air conditioning without any interruption.





## Air Cooled Ducted Split Air Conditioners - R1/R2 Series

DESCRIPTION	UNITS	DSA361R1/R2	DSA661R1/R2	DSA1021R1/R2	DSA1052R1/R2	DSA1322R1/R2	DSA1321R1/R2	DSA2042R1/R2	DSA2642R1/R2
Nominal Cooling Capacity	TR	3.0	5.5	8.5	8.75	11.0	11.0	17.0	22.0
	Btu/Hr	36,000	66,000	102,000	105,000	132,000	132,000	204,000	264,000
	kCal/Hr	9,072	16,632	25,704	26,460	33,264	33,264	51,408	66,528
Refrigerant		R1 Series: R 22; R2 Series: R 407C							
Power Supply (AC)		380/420 V, 3 PH, 50 Hz							
External Finish		Pure Polyester Powder Coated GI Steel Housing							
<b>Indoor Unit</b>									
Dimensions	WxDxH (mm)	950x575x380	1175x635x460	1500x635x460	1500x635x460	1860x635x460	1860x635x460	2035x1085x550	2135x1215x690
Power Supply (AC)		380/420 V, 3 PH, 50 Hz							
Type of Blower		Centrifugal Forward Curved, Double Inlet, Double Width							
Nominal Air Flow	CMH	2040	3740	5780	5950	7480	7480	11560	14960
	CFM	1200	2200	3400	3500	4400	4400	6800	8800
Capacity Control		0,100%	0,100%	0,100%	0, 50%,100%	0, 50%,100%	0,100%	0, 50%,100%	0, 50%,100%
Air Filter		Non-woven Polyester Media Enclosed by HDPE Mesh							
Controller		Microprocessor Based with LCD Display							
<b>Outdoor Unit</b>									
No of ODUs	Per Unit	1	1	1	1	2	1	2	2
Compressor Type		Recip	Hermetically Sealed Scroll						
No of Compressors/ODU		1	1	1	2	1	1	1	1
Dimensions	WxDxH (mm)	1020x420x690	1020x420x950	1190x550x950	1435x635x950	1020x420x935	1435x635x950	1190x550x950	1435x635x950
Power Supply (AC)		415 V, Three Phase, 50 Hz							
Condenser Type		Air-cooled FTHX							
Condenser Fan Type		Propeller							
Indoor Unit Weight	kg	50	55	85	85	105	105	150	210
Outdoor Unit Weight	kg/ODU	80	90	160	170	90	190	160	190

## Air Cooled Packaged Air Conditioners - R1/R2 Series

DESCRIPTION	UNITS	DPA661R1/R2	DPA1052R1/R2	DPA1322R1/R2	DPA1321R1/R2	DPA1983R1/R2	DPA2642R1/R2
Nominal Cooling Capacity	TR	5.5	8.75	11.0	11.0	16.5	22.0
	Btu/Hr	66,000	105,000	132,000	132,000	198,000	264,000
	kCal/Hr	16,632	26,460	33,264	33,264	49,896	66,528
Refrigerant		R1 Series: R 22; R2 Series: R 407C					
Power Supply (AC)		380/420 V, 3 PH, 50 Hz					
External Finish		Pure Polyester Powder Coated GI Steel Housing					
<b>Indoor Unit</b>							
Dimensions	WxDxH (mm)	900x660x1700	1160x660x1700	1160x660x1700	1160x660x1700	1500x750x1750	1500x930x1950
Type of Blower		Centrifugal Forward Curved, Double Inlet, Double Width					
Nominal Air Flow	CMH	3740	5950	7475	7475	11210	14950
	CFM	2200	3500	4400	4400	6600	8800
Power Supply (AC)		415V, Three Phase, 50 Hz					
External Finish		Pure Polyester Powder Coated GI Steel Housing					
Compressor Type		Hermetically Sealed Scroll					
No of Compressors Unit		1	2	2	1	3	2
Capacity Control		0,100%	0, 50%,100%	0, 50%,100%	0,100%	0, 33%,66%,100%	0, 50%,100%
Air Filter		Non-woven Polyester Midea Enclosed by HDPE Mesh					
Controller		Microprocessor Based with LCD Display					
<b>Outdoor Unit</b>							
No of ODUs	Per Unit	1	2	2	1	3	2
Dimensions	WxDxH (mm)	1020x420x950	1020x420x950	1020x420x950	1435x635x950	1020x420x950	1435x635x950
Power Supply (AC)		230 V, Single Phase, 50 Hz					
Condenser Type		Air-cooled FTHX					
Condenser Fan	Type	Propeller					
Indoor Unit Weight	kg	195	250	270	260	430	500
Outdoor Unit Weight	kg/ODU	50	50	50	130	50	130

## Air Cooled Packaged Air Conditioners - R3 Series

DESCRIPTION	UNITS	DPA721R3	DPA1081R3	DPA1442R3	DPA1441R3	DPA2163R3	DPA2882R3
Nominal Cooling Capacity	TR	6.0	9.00	12.0	12.0	18.0	24.0
	Btu/Hr	72,000	108,000	144,000	144,000	216,000	288,000
	kCal/Hr	18,144	27,216	36,288	36,288	54,432	72,576
Refrigerant		R 410A					
Power Supply (AC)		380/420 V, 3 PH, 50 Hz					
External Finish		Pure Polyester Powder Coated GI Steel Housing					
<b>Indoor Unit</b>							
Dimensions	WxDxH (mm)	930x660x1700	930x660x1700	1260x760x1700	1260x760x1700	1500x835x1830	1500x930x1950
Type of Blower		Centrifugal Forward Curved, Double Inlet, Double Width					
Nominal Air Flow	CMH	4080	6120	8155	8155	12230	16310
	CFM	2400	3600	4800	4800	7200	9600
Power Supply (AC)		415V, Three Phase, 50 Hz					
Compressor Type		Hermetically Sealed Scroll					
No of Compressors Unit		1	1	2	1	3	2
Compressor Configuration		Solo	Solo	Tandem	Solo	Tandem+Solo	Tandem
No of Circuits		1	1	1	1	2	1
Capacity Control		0,100%	0,100%	0, 50%,100%	0,100%	0, 33%, 66%,100%	0, 50%,100%
Air Filter		Non-woven Polyester Media Enclosed by HDPE Mesh					
Controller		Microprocessor Based with LCD Display					
<b>Outdoor Unit</b>							
No of ODUs	Per Unit	1	1	1	1	2 (1x12TR + 1x6TR)	2
Dimensions	WxDxH (mm)	1020x420x950	1190x550x950	1435x635x950	1435x635x950	1435x635x950 1020x420x950	1435x635x950
Power Supply (AC)		230 V, Single Phase, 50 Hz					
Condenser Type		Air-cooled FTHX					
Condenser Fan	Type	Propeller					
Indoor Unit Weight	kg	200	250	300	300	500	580
Outdoor Unit Weight	kg/ODU	50	80	92	92	92 + 50	92

## Air Cooled Ducted Split Air Conditioners -R3 Series

DESCRIPTION	UNITS	DSA721R3	DSA1081R3	DSA1441R3	DSA1442R3	DPA2162R3	DPA2882R3
Nominal Cooling Capacity	TR	6.0	9.00	12.0	12.0	18.0	24.0
	Btu/Hr	72,000	1,08,000	1,44,000	1,44,000	2,16,000	2,88,000
	Kcal/Hr	18,144	27,216	36,288	36,288	54,432	72,576
Refrigerant		R 410A					
Power Supply		380/420 V, 3 Ph, 50Hz, AC					
External Finish		Pure Polyester Powder Coated GI Steel Housing					
<b>Indoor Unit</b>							
Dimensions	WxDxH (mm)	1175X635X460	1500X635X460	1860X635X460	1860X635X460	2035X1085X550	2135X1215X690
Power Supply		230V, Single 1 Ph, 50 Hz, ac supply					
Type of Blower		Centrifugal Forward Curved, Double Inlet, Double Width					
Nominal Air Flow	CMH	3740	5780	7480	7480	11560	14940
	CFM	2200	3400	4400	4400	6800	8800
Capacity Control		0, 100%	0, 100%	0, 100%	0, 50%, 100%	0, 50%, 100%	0, 50%, 100%
Air Filter		Non-woven Polyester Media Enclosed by HDPE Mesh					
Controller		Microprocessor Based with LCD Display					
<b>Out Door Unit</b>							
No of ODUs	Per Unit	1	1	1	2	2	2
Compressor Type		Hermetically Sealed Scroll					
No of Compressors/ODU		1	1	1	1	1	1
Dimensions	WxDxH (mm)	1020x420x950	1190x550x950	1435x635x950	1020x420x950	1190x550x950	1435x635x950
Power Supply		380/420 V, 3 Ph, 50Hz, AC					
Condenser Type		Aircooled FTHX					
Condenser Fan Type		Propeller Type					
Indoor Unit Weight	kg	55	85	105	105	150	210
Out Door Unit weight	kg/ODU	95	160	190	95	160	190

## Water Cooled Packaged Air Conditioners - R1/R2 Series

DESCRIPTION	UNITS	DPW661R1/R2	DPW1322R1/R2	DPW1983R1/R2
Nominal Cooling Capacity	TR	5.5	11.00	16.5
	Btu/Hr	66,000	132,000	198,000
	Kcal/Hr	16,632	33,264	49,896
Refrigerant		R1 Series: R 22; R2 Series: R 407C		
Dimensions	WxDxH (mm)	900x660x1700	1160x660x1700	1500x750x1800
Type of Blower		Centrifugal Forward Curved, Double Inlet, Double Width		
Nominal Air Flow	CMH	3740	7475	11210
	CFM	2200	4400	6600
Cooling Coil		Inner Grooved Copper Tubes with Al Slit Fins		
Electrical Power Supply		380/420V, Three Phase, 50 Hz, AC Supply		
External Finish		Pure Polyester Powder coated GI steel housing		
Capacity Control		0,100%	0,50%, 100%	0,33%, 66%, 100%
Air Filter		Non-woven Polyester Media Enclosed by HDPE Mesh		
Controller		Microprocessor Based with LCD Display		
Compressor type		Hermetically Sealed Scroll		
No of compressors/Unit		1	2	3
Condenser Type		Shell & Tube Type		
Cooling water required at 32 deg. C	USGPM	20	40	60
	CMH	4.5	9.1	13.6
Unit Weight	kg	240	405	605

## DSW Mini - R1 Series

DESCRIPTION	UNITS	DSW181R1	DSW241R1
Nominal Cooling Capacity	TR	1.5	2
	Btu/Hr	18000	24000
	kCal/Hr	4536	6048
Refrigerant		R-22	
Dimensions	WxDxH (mm)	1160x675x550	
Type of Blower		Centrifugal Forward Curved, Double Inlet, Double Width	
Nominal Airflow	CMH	890	1275
	CFM	525	750
Cooling Coil			
Electrical Power Supply	V/Ph/Hz	230 V, 1 Ph, 50Hz, AC Supply	
External Finish		Pure Polyester Power Coated GI Steel Housing	
Air Filter		Non-woven Polyester Media Enclosed in HDPE Mesh	
Controller		Microprocessor Based with LCD Display	
Compressor Type		Rotary	
Condenser Type		Shell & Tube	
Water Inlet and Outlet Sizes	mm	25.4 BSP	
	inch	1	
Cooling Water Flow Requirement (@32 ° C)	USGPM	4.5	6
	CMH		
Unit Weight	kg	124	127

## Water Cooled Ducted Split Air Conditioners - R1/R2 Series

DESCRIPTION	UNITS	DSW361R1/R2	DSW661R1/R2	DSW1052R1/R2	DSW1322R1/R2
Nominal Cooling Capacity	TR	3.0	5.5	8.75	11.0
	Btu/Hr	36,000	66,000	105,000	132,000
	kCal/Hr	9,072	16,632	26,460	33,264
Refrigerant		R1 Series: R 22; R2 Series: R 407C			
Power Supply (AC)		380/420 V, 3 PH, 50 Hz			
External Finish		Pure Polyester Powder Coated GI Steel Housing			
<b>Indoor Unit</b>					
Dimensions	WxDxH (mm)	950x575x380	1175x635x460	1500x635x460	1860x635x460
Type of Blower		Centrifugal Forward Curved, Double Inlet, Double Width			
Nominal Air Flow	CMH	2040	3740	5950	7480
	CFM	1200	2200	3500	4400
Power Supply (AC)		230 V, 1 Ph, 50 Hz			
Capacity Control		0,100%	0,100%	0, 50%,100%	0, 50%,100%
Air Filter		Non-woven Polyester Media Enclosed by HDPE Mesh			
Controller		Microprocessor Based with LCD Display			
<b>Condensing Unit</b>					
No of cds. units	per Unit	1	1	1	1
Compressor Type		Recip	Hermetically sealed Scroll		
No of Compressors/ Unit		1	1	2	2
Dimensions	WxDxH (mm)	800x655x545	800x655x545	1170x640x630	1170x640x630
Power Supply (AC)		415 V, Three Phase, 50 Hz			
Condenser Type		Water-cooled, Shell & Tube Type			
Cooling water required at 32°C	USGPM	11	20	31	40
	CMH	2.5	4.5	7	9.1
Indoor Unit Weight	kg	50	55	85	110
Outdoor Unit Weight	kg/ODU	130	156	215	215

Specifications are subject to change due to continuous product development.



For more information, please contact **BLUE STAR LIMITED** • **Ahmedabad**: 301 & 302, (3rd Floor), Abhishree Avenue, (Near) Nehru Circle, SM Road, Ambawadi, Ahmedabad - 380 015. Tel: (079) 40224000 • **Bengaluru**: Anjuman KAY A R R Tower No - 28, Ward No 77, Mission Road, Bangalore - 560027. Tel: (080) 41854000 • **Bhubaneshwar**: 3A, Satya Nagar, 2nd Floor, Bhubaneshwar - 751 007. Tel: (0674) 2572403 / 2573670 • **Chandigarh**: Adarsh Mall, 4th Floor, Plot No. 50, Industrial & Business Park, Phase - II, Chandigarh - 160 002. Tel: (0172) 5024000 • **Chennai**: KRM Plaza, No 2, Harrington Road, Chetpet, Chennai - 600 031. Tel: (91) (44) 42444000 • **Ghaziabad**: C 53A, Third Floor, Rajnagar District Center (RDC), Raj Nagar, Ghaziabad - 201001, Uttar Pradesh. Tel No: (0120) 2821400 • **Goa**: 210, 2nd Floor, Gera's Imperium I, Patto, Panjim, Goa - 403 001. Tel: (0832) 2438171/2437287 • **Gurgaon**: Block 2-A, DLF Corporate Park, DLF Qutab Enclave, Phase III, Mehrauli-Gurgaon Road, Gurgaon - 122 002. Tel: (0124) 4094100 • **Guwahati**: Oasis Plaza, Dr. B. Baroah Road, Ulubari, Kamrup, Guwahati - 781007. Tel: (0361) 2468496 • **Indore**: Shri Krishna Classic, First Floor, 139, Phadnis Colony, AB Road, Indore - 542 010. Tel: (0731) 4001211/4001311 • **Jaipur**: A-19, 1st Floor, Main Sahakar Path, Near Sahakar Bhavan, Jaipur - 302 001. Tel: (0141) 2744033-35 • **Kochi**: 2nd Floor, Millennium Plaza, MKK Nair Road, Alinchuvadu Junction, Kochi - 682 024. Tel: (0484) 4499000 • **Kolkata**: 7, Hare Street, Kolkata - 700 001. Tel: (033) 22134100 • **Ludhiana**: SCO 16-17, Feroze Gandhi Market, Fortune Chambers, 3rd Floor, Ludhiana - 141001 (Punjab), Tel: 0161 5001404 • **Lucknow**: 177/4, Faizabad Road, Lucknow - 226 007. Tel: (0522) 4034000 • **Mumbai**: Blue Star House, 9-A, Ghatkopar Link Road, Saki Naka, Mumbai - 400 072. Tel: (022) 66684100 • **Nagpur**: 219, Bajaj Nagar, 1st Floor, South Ambazari Road, Nagpur - 440 010. Tel: (0712) 2249000 / 6624000 • **Pune**: 201/A, Nityanand Complex, 1st Floor, 247/A, Bund Garden Road, Pune - 411 001. Tel: (020) 41044000 / 26169332 • **Raipur**: Alaska Corporates, 3rd Floor, Opp. VIP Road, Jivan Vihar Colony, G E Road, Raipur, Chhattisgarh - 492 006. Tel: (0771) 6544000 • **Secunderabad**: 207, Sikh Road, Bantia Estate, Secunderabad - 500 003. Tel: (040) 44004100 • **Thiruvananthapuram**: TC IV/962, 'Chandrika', Sree Chitra Nagar, PipeLine Road, Kawdiar, Thiruvananthapuram - 695 003. Tel: (0471) 2720025 / 65 • **Vadodara**: Ramakrishna Chambers, 7th Floor, Productivity Road, Alkapuri, Vadodara - 390 007. Tel: (0265) 2330334 / 6614100 • **Visakhapatnam**: D. No. 49-24-65/1, Near Sankarmatam Road, Madhura Nagar, Visakhapatnam - 530 016. Tel: (0891) 2748405/ 2748433 • **Vijayawada**: No. 40-1-62, Nagas Hafeez Plaza, Opposite to grand modern supermarket, Near BENZ Circle, MG. Road, Vijayawada 10.Tel.No. : 0866 2484004.

• email: [coolingsolutions@bluestarindia.com](mailto:coolingsolutions@bluestarindia.com) • Visit us at: [www.bluestarindia.com](http://www.bluestarindia.com) or SMS 'COOL' to 57575